



MigmaMidblock™ for Pedestrian Detection

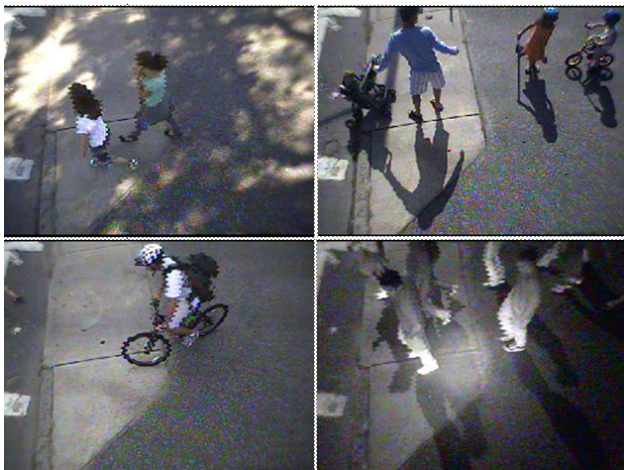


MigmaMidblock™ is an outdoor passive pedestrian detector at the midblock crossings for automated RRFB actuation to alert the approaching vehicle drivers about the pedestrians who are about to enter the crosswalks.

- △ High resolution IR LED stereo camera for day and night detection
- △ Industrial single board computer (SBC)
- △ Remote view, configuration and diagnosis over Ethernet
- △ Robust pedestrian detection using stereo vision analysis
- △ Directional detection to avoid unnecessary detections
- △ Support of Power over Ethernet (PoE) for stereo cameras

MigmaMidblock™ utilizes the field-proven technologies for pedestrian detection and offers advanced features.

- △ Analytical video cueing and 3D pattern recognition
- △ Pedestrian detection both day and night, even in total darkness
- △ Operational under any weather conditions
- △ Configurable pedestrian detection zone
- △ Interface with beacon flasher through relay contact
- △ Small size suitable for pole-mount cabinet
- △ Simple wiring and connection using Ethernet cables
- △ Over 98% detection rate and negligible false calls per day



SPECIFICATIONS

- △ Image Sensor: 1/3" Sony CCD Chip
- △ Camera Resolution: 700 TV lines
- △ Camera Mounting Height: 12 ~ 18 ft
- △ Activation Time: ~1 second (configurable)
- △ IR Range: 100 ft (~30m) in total darkness
- △ S/N Ratio: ≥ 48 dB
- △ Cable: CAT5e Ethernet cables
- △ Camera Power: Power over Ethernet
- △ Operating Temperature: -22 °F ~ 158 °F (-30 °C ~ 70 °C)
- △ Operating Humidity: 0% ~ 96%
- △ Operating Environment: All weather, day and night
- △ SBC Dimension: 8(L)×6.5(W)×2(H) (inch)
- △ Stereo Camera Dimension: 5(L)×7.5(W)×3.5(H) (inch)
- △ Failsafe and watchdog timer support



Corporate Headquarters
Migma Systems, Inc.
1600 Providence Highway
Walpole, Massachusetts 02081

Contact Information

Web: <http://www.migmapd.com>
Sales: sales@migmapd.com
Support: support@migmapd.com
Phone: 508-660-0328
Fax: 508-660-0288

Migma