

Welcome to Migma product family. We value your business! For your convenience, we have pre-assembled most of the parts. Please follow few steps below to assembly *Beacon Flasher*, *Shield*, and *Solar Panel* which are included in the shipping package.

Assemble Solar Panel

Step 1: Remove the nut from the bolt on top of the beacon (shown in Figure 1).

Step 2: Place the solar panel bracket into the bolt and tighten the screw (shown in Figure 2).

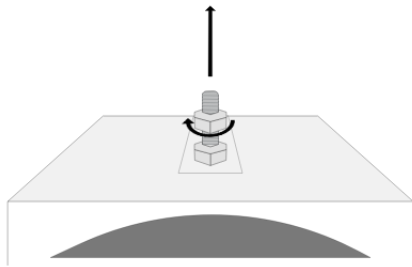


Figure 1

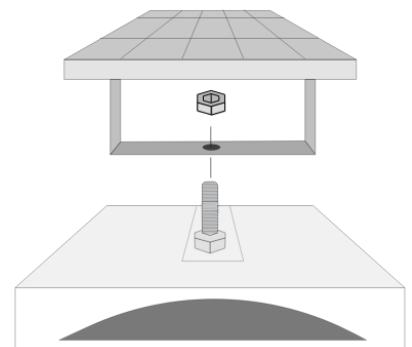


Figure 2

Assemble Flasher Shield

There are four small screws pre-mounted on the flasher housing. First, install the flasher shield by curving it into the groove of the flasher's outer edge and aligning its two small slots with the two screws pre-mounted. Now tighten all four screws along the outer groove into the shield to secure in place (shown in Figure 3).

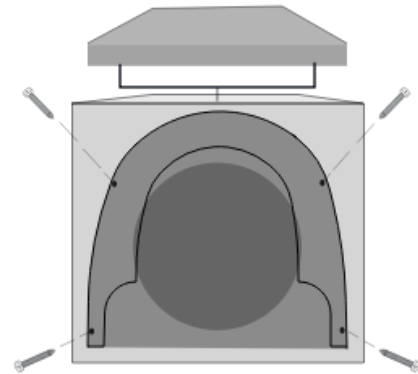


Figure 3

Mount Flasher Housing to Post

This beacon flasher can be mounted on top of a typical street sign post such as stop sign post, shown in Figure 4. We strongly recommend using the street sign post.

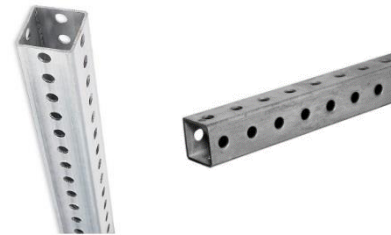


Figure 4

The flasher has a mounting bracket on the back, which is compatible with all standard sign posts (shown in Figure 5). Please follow the instructions of your specific post to bolt the flasher housing using the back bracket as a mounting point.

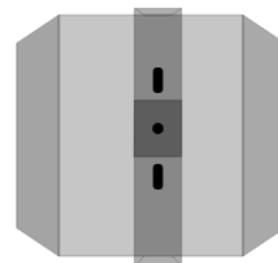


Figure 5

Note: Turn on the switch located at the bottom of housing to make the flasher operational.